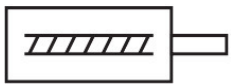
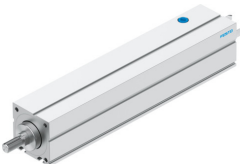


Electric actuator EPCC-BS-60-150-12P-A

Part number: 5428906

FESTO



Data sheet

Feature	Value
Size	60
Stroke	150 mm
Stroke reserve	0 mm
Piston rod thread	M12x1.25
Reversing backlash	100 µm
Screw diameter	12 mm
Spindle pitch	12 mm/U
Max. angle of rotation of the piston rod +/-	1 deg
Mounting position	Any
Piston rod end	External thread
Motor type	Stepper motor Servo motor
Position sensing	For proximity sensor
Structural design	Electric actuator with ball screw drive
Spindle type	Ball screw drive
Protection against torsion/guide	With plain-bearing guide
Max. acceleration	15 m/s ²
Max. rotational speed	3000 rpm
Max. speed	0.6 m/s
Max. homing speed	0.01 m/s
Repetition accuracy	±0.02 mm
Duty cycle	100%
Corrosion resistance class (CRC)	0 - No corrosion stress
LABS (PWIS) conformity	VDMA24364 zone III
Suitability for the production of Li-ion batteries	Product corresponds to Festo's internal product definition for use in battery production:Metals with more than 1% by mass of copper, zinc or nickel are excluded from use.The exceptions are nickel in steel, chemically nickel-plated surfaces, circuit boards, cables, electrical plug connectors and coils
Cleanroom class	Class 9 according to ISO 14644-1
Storage temperature	-20 °C...60 °C

Feature	Value
Relative air humidity	0 - 95 % Non-condensing
Degree of protection	IP40
Ambient temperature	0 °C...60 °C
Impact energy in the end positions	0.024 J
Max. driving torque	2.4 Nm
Max. torque Mx	0 Nm
Max. torque My	6.4 Nm
Max. torque Mz	6.4 Nm
Max. radial force on actuator shaft	230 N
Max. feed force Fx	1000 N
No-load driving torque	0.325 Nm
Guide value for payload, horizontal	120 kg
Guide value for payload, vertical	60 kg
Mass moment of inertia JH per meter of stroke	0.1519 kgcm ²
Mass moment of inertia JL per kg of payload	0.0365 kgcm ²
Mass moment of inertia JO	0.0779 kgcm ²
Maintenance interval	Life-time lubrication
Moving mass at 0 mm stroke	305 g
Additional moving mass per 10 mm stroke	6.5 g
Basic weight with 0 mm stroke	1114 g
Additional weight per 10 mm stroke	69 g
Type of mounting	With internal thread With accessories
Note on materials	RoHS-compliant
Housing material	Wrought aluminum alloy Smooth anodized
Piston rod material	High-alloy stainless steel
Spindle nut material	Steel
Spindle material	Roller bearing steel