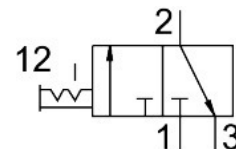


# Shut off valve MS6N-EM1-1/4

Part number: 541293

FESTO



## Data sheet

| Feature                                  | Value  |
|--|--|
| Structural design                        | Rotary gate valve  |
| Actuation type                           | Manual   |
| Exhaust air function                     | Without flow control option  |
| Type of control                          | Direct   |
| Valve function                           | 3/2, bistable  |
| Operating pressure                       | 0 bar...18 bar   |
| C value                                  | 10.7 l/sbar  |
| b-value                                  | 0.56   |
| Standard nominal flow rate               | 3000 l/min   |
| Operating medium                         | Compressed air as per ISO 8573-1:2010 [7:4:4]<br>Inert gas         |
| Information on operating and pilot media | Operation with oil lubrication possible (required for further use) |
| Corrosion resistance class (CRC)         | 2 - Moderate corrosion stress                                      |
| Note on materials                        | RoHS-compliant   |
| LABS (PWIS) conformity                   | VDMA24364-B1/B2-L  |
| Temperature of medium                    | -10 °C...60 °C   |
| Ambient temperature                      | -10 °C...60 °C   |
| For use in the food industry             | See supplementary material information                             |
| Type of mounting                         | Line installation<br>With accessories<br>Optionally:               |
| Mounting position                        | Any  |
| Flow direction                           | Non-reversible   |
| Product weight                           | 580 g  |
| Pneumatic connection 1                   | 1/4 NPT  |
| Pneumatic connection 2                   | 1/4 NPT  |
| Pneumatic connection 3                   | 1/2 NPT  |
| Seals material                           | TPE-U(PU)  |
| Housing material                         | Die-cast aluminum  |