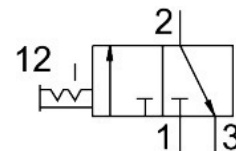


Shut off valve MS6-EM1-1/2-Z

Part number: 541270

FESTO



Data sheet

Feature	Value
Structural design	Rotary gate valve
Actuation type	Manual
Exhaust air function	Without flow control option
Type of control	Direct
Valve function	3/2, bistable
Operating pressure	0 bar...18 bar
C value	30.8 l/sbar
b-value	0.57
Standard nominal flow rate	8700 l/min
Operating medium	Compressed air as per ISO 8573-1:2010 [7:4:4] Inert gas
Information on operating and pilot media	Operation with oil lubrication possible (required for further use)
Corrosion resistance class (CRC)	2 - Moderate corrosion stress
Note on materials	RoHS-compliant
LABS (PWIS) conformity	VDMA24364-B1/B2-L
Temperature of medium	-10 °C...60 °C
Ambient temperature	-10 °C...60 °C
For use in the food industry	See supplementary material information
Type of mounting	Line installation With accessories Optionally:
Mounting position	Any
Flow direction	Non-reversible
Product weight	580 g
Pneumatic connection 1	G1/2
Pneumatic connection 2	G1/2
Pneumatic connection 3	G1/2
Seals material	TPE-U(PU)
Housing material	Die-cast aluminum