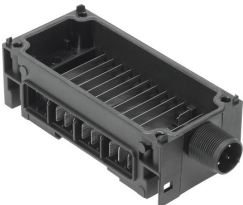


Interlinking block CPX-GE-EV-V-7/8-4POL

Part number: 541252



Data sheet

Feature	Value
Type of mounting	Tie rod
Product weight	125 g
Corrosion resistance class (CRC)	1 - Low corrosion stress
LABS (PWIS) conformity	VDMA24364-B2-L
Note on materials	RoHS-compliant
Housing material	PA-reinforced
Electrical connection	4-pin 7/8" round plug connector
Max. power supply	10 A
Power supply	Additional supply for pneumatic valves