

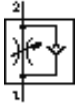
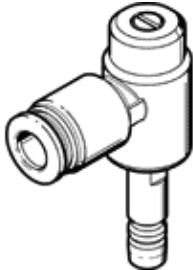
One-way flow control valve

VFOC-E-S4-Q4

Part number: 540362

FESTO

With push-in sleeve for adjusting the rotational speed or extending and retracting speed of a cylinder



Data sheet

| Feature | Value |
|---|--|
| Valve function | One-way flow control function for exhaust air |
| Pneumatic connection, port 1 | QS-4 |
| Pneumatic connection, port 2 | Push-in sleeve QS-4 |
| Type of actuation | manual |
| Adjusting element | Slotted head screw |
| Mounting type | Plug-in With push-in sleeve |
| Standard nominal flow rate in flow control direction | 0 ... 100 l/min |
| Standard nominal flow rate in non-return direction | 60 ... 100 l/min |
| Working pressure | 0.2 ... 10 bar |
| Ambient temperature | -10 ... 60 °C |
| Operating medium | Dried compressed air, lubricated or unlubricated |
| Assembly position | Any |
| Standard flow rate in direction of flow control: 6 -> 0 bar | 0 ... 170 l/min |
| Standard flow rate in blocked direction: 6 -> 0 bar | 130 ... 160 l/min |
| Storage temperature | -10 ... 40 °C |
| Medium temperature | -10 ... 60 °C |
| Product weight | 9.2 g |
| Note on pneumatic connection 2 | appropriate for Festo QS connections only |
| Materials note | Free of copper and PTFE |
| Materials information for seals | NBR |
| Material information, hollow bolt | Wrought Aluminum alloy Anodized Clear |
| Release ring material data | POM |
| Regulating screw material data | High alloy steel, non-corrosive |
| Swivel joint material data | Zinc die-casting |