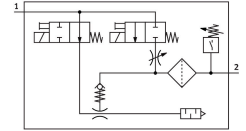


Vacuum generator OVEM-10-H-B-GO-OE-N-2P

Part number: 540007

FESTO



Data sheet

| Feature | Value |
|-------------------------------|--|
| Nominal width of Laval nozzle | 0.95 mm |
| Width dimension | 20 mm |
| Muffler construction type | Open |
| Mounting position | Any |
| Ejector characteristics | High vacuum Standard |
| Grade of filtration | 40 µm |
| Manual override | Non-detenting Additionally via operating buttons |
| Integrated function | Ejector pulse valve, electric Flow control Shut off valve, electric Compressed air filter Air saving function, electrical Non-return valve Pneumatic muffler open Vacuum switch |
| Structural design | Modular |
| Short-circuit protection | yes |
| Measured variable | Relative pressure |
| Measuring principle | Piezoresistive |
| Switching element function | N/C contact N/O contact |
| Switching function | Window comparator Threshold value comparator |
| Valve function | Open |
| Reverse polarity protection | for all electrical connections |
| Switching input to standard | IEC 61131-2 |
| Display type | 4-character alphanumeric Back-lit LCD |
| Display range | -0.999 bar...0 bar |
| Displayable unit(s) | bar |
| Setting range hysteresis | -0.9 bar...0 bar |
| Setting options | Via display and pushbuttons |
| Switching position indication | LCD |

| Feature | Value |
|---|---|
| Switching status indication | Optical |
| Setting range threshold value | -0.999 bar...0 bar |
| Operating pressure | 2 bar...8 bar |
| Operating pressure for max. vacuum | 3.5 bar |
| Max. vacuum | 93 % |
| Nominal operating pressure | 6 bar |
| Max. suction rate with respect to atmosphere | 19.5 l/min |
| Air supply time at nominal operating pressure | 0.2 s |
| DC operating voltage range | 20.4 V...27.6 V |
| Duty cycle | 100% |
| Inductive protective circuit | Adapted to MZ, MY and ME coils |
| Max. output current | 100 mA |
| Residual current | 0.1 mA |
| Switching output | 2xPNP |
| Voltage drop | 1.5 V |
| Coil characteristics | 24 V DC: low-current phase 0.3 W, high-current phase 2.55 W |
| Overload protection | Available |
| Certification | RCM compliance mark c UL us - Listed (OL) |
| KC characters | KC EMC |
| CE marking (see declaration of conformity) | As per EU EMC directive |
| UKCA marking (see declaration of conformity) | To UK instructions for EMC |
| Operating medium | Compressed air as per ISO 8573-1:2010 [7:4:4] |
| Information on operating and pilot media | Operation with oil lubrication not possible |
| Corrosion resistance class (CRC) | 2 - Moderate corrosion stress |
| LABS (PWIS) conformity | VDMA24364 zone III |
| Temperature of medium | 0 °C...50 °C |
| Relative air humidity | 5 - 85 % |
| Noise level at nominal operating pressure | 73 dB(A) |
| Degree of protection | IP65 |
| Ambient temperature | 0 °C...50 °C |
| Max. tightening torque | 0.8 Nm with internal thread 2.5 Nm with through-hole |
| Product weight | 310 g |
| Pressure measuring range | -1 bar...0 bar |
| Accuracy in ± % FS | 3 %FS |
| Input switching logic | PNP (positive switching) |
| Electrical connection | 5-pin M12x1 Plug |
| Type of mounting | With through-hole With internal thread With accessories |
| Pneumatic connection 1 | G1/4 |
| Pneumatic connection 3 | Pneumatic muffler integrated |
| Vacuum connection | G1/4 |
| Note on materials | RoHS-compliant |
| Seals material | NBR |
| Female nozzle material | POM |
| Compressed air filter material | Fabric PA Sintered steel |
| Material of filter housing | PA-reinforced |
| Housing material | Die-cast aluminum PA-reinforced |

| Feature | Value |
|-------------------------------|-----------------------------------|
| Material of adjusting screw | Steel |
| Muffler material | Wrought aluminum alloy PU foam |
| Material of screws | Steel |
| Inspection window material | PA |
| Material of plug housing | Brass, nickel-plated |
| Material of pins | Steel |
| Material of jet nozzle | Wrought aluminum alloy |
| Material of pneumatic fitting | Wrought aluminum alloy, anodized |