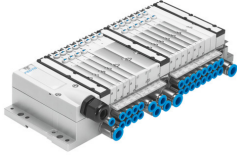


Valve manifold MPA-MPM-VI

Part number: 539105

FESTO



Data sheet

Feature	Value
Electrical actuation	Multi-pin
Valve terminal type	32
Operating medium	Compressed air as per ISO 8573-1:2010 [7:4:4]
Information on operating and pilot media	Operation with oil lubrication possible (required for further use)
Temperature of medium	-5 °C...50 °C
Ambient temperature	-5 °C...50 °C
Storage temperature	-20 °C...40 °C
Relative air humidity	Max. 90 % at 40 °C
Degree of protection	IP67
Corrosion resistance class (CRC)	1 - Low corrosion stress
Operating pressure	-0.09 MPa...1 MPa -0.9 bar...10 bar
Pilot pressure MPa	0.3 MPa...0.8 MPa
Pilot pressure	3 bar...8 bar
LABS (PWIS) conformity	VDMA24364-B1/B2-L
CE marking (see declaration of conformity)	As per EU EMC directive As per EU RoHS directive
UKCA marking (see declaration of conformity)	To UK instructions for EMC acc. to UK EX instructions To UK RoHS instructions
KC characters	KC EMC
Certification	RCM compliance mark c UL us - Recognized (OL)
Explosion prevention and protection	Zone 1 (UKEX) Zone 2 (ATEX) Zone 21 (UKEX)
ATEX category gas	II 3G
Explosion protection certification outside the EU	EPL Db (GB) EPL Gb (GB)
Type of ignition protection for gas	Ex ec IIC T4 Gc X
Explosive ambient temperature	-5°C ≤ Ta ≤ +50°C
Note on materials	RoHS-compliant
Valve manifold design	Modular, pneumatic valve sizes can be mixed
Max. no. of valve positions	24

Feature	Value
Max. no. of pressure zones	7
Actuation type	Electrical
Valve function	2/2, closed, monostable 2x3/2, closed, monostable 2x3/2, open, monostable 2x3/2, open/closed, monostable 3/2, closed, monostable 3/2, open, monostable 5/2, bistable 5/2, monostable 5/3, pressurized 5/3, exhausted 5/3, closed
Structural design	Piston gate valve Poppet valve with return spring
Valve size	10 mm 14 mm 20 mm
Pilot air supply port	External Internal
Max. standard nominal flow rate	360 l/min at 10 mm 550 l/min at 14 mm 700 l/min at 20 mm
Suitability for vacuum	yes
Pneumatic working port	M7 G1/8 QS-4 QS-6 QS-8 QS-3/16 QS-1/4 QS-5/16
Signal status display	LED
Nominal operating voltage DC	24 V
Permissible voltage fluctuations	+/- 25 %