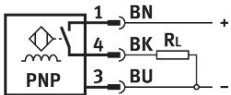
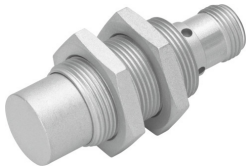


# Proximity sensor SIEF-M18B-PS-S-L-WA

Part number: 538301

FESTO



## Data sheet

Feature	Value
Design	Round
Conforms to standard	EN 60947-5-2
Certification	RCM compliance mark c UL us - Listed (OL)
CE marking (see declaration of conformity)	As per EU EMC directive
Measuring principle	Inductive
Rated operating distance	5 mm
Assured operating distance	4.05 mm
Reduction factors	Aluminum = 1.0 Stainless steel St 18/8 = 1.0 Copper = 1.0 Brass = 1.0 Steel St 37 = 1.0
Ambient temperature	-30 °C...85 °C
Repetition accuracy	0.1 mm
Switching output	PNP
Switching element function	N/O contact
Hysteresis	0.15 mm...0.75 mm
Max. switching frequency DC	2500 Hz
Max. output current	200 mA
Voltage drop	1.8 V
Short-circuit protection	Pulsed
DC operating voltage range	10 V...30 V
Residual ripple	10 %
Idle current	15 mA
Reverse polarity protection	for all electrical connections
Electrical connection	3-pin Fixcon M12x1 Plug
Size	M18
Type of mounting	With lock nut
Tightening torque	15 Nm
Mounting type	Flush

Feature	Value
Product weight	48 g
Housing material	Brass PBT PTFE-coated
Switching status indication	LED yellow
Degree of protection	IP67
Resistance to interference from magnetic fields	Magnetic direct and alternating fields
Corrosion resistance class (CRC)	0 - No corrosion stress
Selection of additional sensor information	with reduction factor 1 – resistance to magnetic fields
Electrical output	PNP
Selection of sensor version	WA resistant to welding splatter