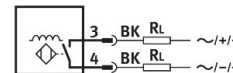
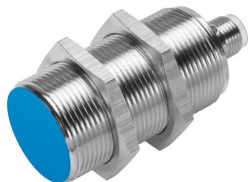


Proximity sensor SIED-M30B-ZS-S-L

Part number: 538287

FESTO



Data sheet

| Feature | Value |
|--|---|
| Design | Round |
| Conforms to standard | EN 60947-5-2 |
| Certification | RCM compliance mark c UL us - Listed (OL) |
| CE marking (see declaration of conformity) | As per EU EMC directive As per EU low voltage directive |
| Measuring principle | Inductive |
| Rated operating distance | 10 mm |
| Assured operating distance | 8.1 mm |
| Reduction factors | Aluminum = 0.4 Stainless steel St 18/8 = 0.7 Copper = 0.3 Brass = 0.4 Steel St 37 = 1.0 |
| Ambient temperature | -25 °C...85 °C |
| Repetition accuracy | 0.3 mm |
| Switching output | Non-contact, 2-wire |
| Switching element function | N/O contact |
| Hysteresis | 0.05 mm...2.2 mm |
| Max. switching frequency DC | 200 Hz |
| Max. switching frequency AC | 25 Hz |
| Max. output current | 300 mA |
| Voltage drop | 8 V |
| Minimum load current | 5 mA |
| Short-circuit protection | no |
| Operating voltage range AC | 20 V...265 V |
| DC operating voltage range | 20 V...320 V |
| Mains frequency | 50 Hz |
| Idle current | 1.5 mA |
| Reverse polarity protection | for all electrical connections |
| Electrical connection | 2-pin M12x1 Plug |
| Size | M30 |

| Feature | Value |
|--|------------------------------------|
| Type of mounting | With lock nut |
| Tightening torque | 30 Nm |
| Mounting type | Flush |
| Product weight | 140 g |
| Housing material | Brass PA Nickel-plated |
| Switching status indication | LED yellow |
| Degree of protection | IP67 |
| Corrosion resistance class (CRC) | 1 - Low corrosion stress |
| LABS (PWIS) conformity | VDMA24364-B2-L |
| Selection of additional sensor information | For direct and alternating voltage |
| Electrical output | Non-contact, 2-wire |
| Selection of sensor version | Standard |