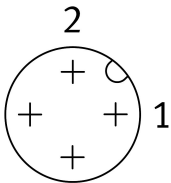
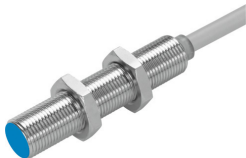


Proximity sensor SIED-M12B-ZO-K-L

Part number: 538274

FESTO



Data sheet

Feature	Value
Design	Round
Conforms to standard	EN 60947-5-2
Certification	RCM compliance mark c UL us - Listed (OL)
CE marking (see declaration of conformity)	As per EU EMC directive As per EU low voltage directive
Measuring principle	Inductive
Rated operating distance	2 mm
Assured operating distance	1.62 mm
Reduction factors	Aluminum = 0.5 Stainless steel St 18/8 = 0.9 Copper = 0.4 Brass = 0.6 Steel St 37 = 1.0
Ambient temperature	-25 °C...85 °C
Repetition accuracy	0.1 mm
Switching output	Non-contact, 2-wire
Switching element function	N/C contact
Hysteresis	0.02 mm...0.44 mm
Max. switching frequency DC	1200 Hz
Max. switching frequency AC	25 Hz
Max. output current	200 mA
Voltage drop	8 V
Minimum load current	5 mA
Short-circuit protection	no
Operating voltage range AC	20 V...265 V
DC operating voltage range	20 V...320 V
Mains frequency	50 Hz
Idle current	1.5 mA
Reverse polarity protection	for all electrical connections
Electrical connection	2-wire Cable

Feature	Value
Cable length	2.5 m
Material of cable sheath	TPE-U(PUR)
Insulating sheath material	PVC
Size	M12
Type of mounting	With lock nut
Tightening torque	10 Nm
Mounting type	Flush
Product weight	90 g
Housing material	Brass PA Nickel-plated
Switching status indication	LED yellow
Ambient temperature with flexible cable installation	-5 °C...50 °C
Degree of protection	IP67
Corrosion resistance class (CRC)	1 - Low corrosion stress
LABS (PWIS) conformity	VDMA24364-B2-L
Selection of additional sensor information	For direct and alternating voltage
Electrical output	Non-contact, 2-wire
Selection of sensor version	Standard