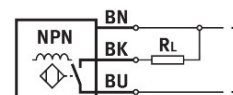
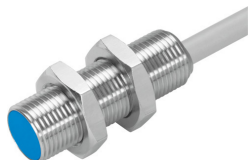


# Proximity sensor SIEH-M12B-NS-K-L-CR

Part number: 538254

**FESTO**



## Data sheet

| Feature                                    | Value  |
|--|--|
| Conforms to standard                       | EN 60947-5-2   |
| Certification                              | RCM compliance mark<br>c UL us - Listed (OL)   |
| CE marking (see declaration of conformity) | As per EU EMC directive  |
| Rated operating distance                   | 6 mm   |
| Assured operating distance                 | 4.86 mm  |
| Reduction factors                          | Aluminum = 1.0<br>Stainless steel, 1 mm thick = 0.45<br>Stainless steel, 2 mm thick = 0.9<br>Copper = 0.85<br>Brass = 1.3<br>Steel St 37 = 1.0 |
| Ambient temperature                        | -25 °C...70 °C   |
| Switching output                           | NPN  |
| Switching element function                 | N/O contact  |
| Reproducibility, switching value FS        | 0.3 mm   |
| Hysteresis                                 | 0.73 mm  |
| Max. switching frequency                   | 600 Hz   |
| Max. output current                        | 200 mA   |
| Voltage drop                               | 2 V  |
| Inductive protective circuit               | Installed<br>Output current <100 mA<br>and switching frequency < 10 Hz   |
| Short-circuit protection                   | Pulsed   |
| DC operating voltage range                 | 10 V...30 V  |
| Residual ripple                            | 20 %   |
| Idle current                               | 17 mA  |
| Reverse polarity protection                | for all electrical connections   |
| Electrical connection                      | 3-wire<br>Cable  |
| Material of cable sheath                   | TPE-U(PUR)   |
| Size                                       | M12  |
| Type of mounting                           | With lock nut  |
| Mounting type                              | Flush  |

| Feature  | Value                             |
|--|-----------------------------------|
| Product weight                                       | 90 g                              |
| Housing material                                     | High-alloy steel                  |
| Switching status indication                          | LED yellow                        |
| Ambient temperature with flexible cable installation | -5 °C...70 °C                     |
| Degree of protection                                 | IP67<br>IP69K                     |
| Resistance to sensor fitting pressure                | 80 bar                            |
| Corrosion resistance class (CRC)                     | 2 - Moderate corrosion stress     |
| LABS (PWIS) conformity                               | VDMA24364-B2-L                    |
| Selection of additional sensor information           | With increased switching distance |
| Electrical output                                    | NPN                               |
| Selection of sensor version                          | Fully stainless steel housing     |