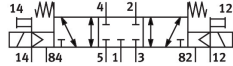
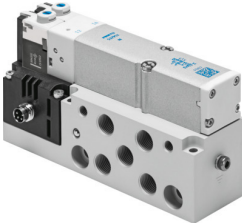


Air solenoid valve

VMPA2-M1H-G-G1/8-PI

Part number: 537966

FESTO



Data sheet

Feature	Value
Valve function	5/3, closed
Actuation type	Electrical
Valve size	20 mm
Standard nominal flow rate	610 l/min
Pneumatic working port	G1/8
Operating voltage	24V DC
Operating pressure	0.3 MPa...0.8 MPa 3 bar...8 bar
Structural design	Piston gate valve
Reset method	Mechanical spring
Certification	c UL us - Recognized (OL)
CE marking (see declaration of conformity)	As per EU EMC directive As per EU RoHS directive
UKCA marking (see declaration of conformity)	To UK instructions for EMC To UK RoHS instructions
Degree of protection	IP65 In mounted state as per IEC 60529
Exhaust air function	With flow control option
Sealing principle	Soft
Mounting position	Any
Manual override	Detenting Non-detenting
Type of control	Pilot-controlled
Pilot air supply port	Internal
Flow direction	Non-reversible
Lap	Overlap
Signal status display	yes
Pilot pressure MPa	0.3 MPa...0.8 MPa
Pilot pressure	3 bar...8 bar
Suitability for vacuum	no
Standard nominal flow rate with QS-8	610 l/min
Switching time off	40 ms

Feature	Value
On switching time	10 ms
Changeover time	21 ms
Max. positive test pulse with 0 signal	400 µs
Max. negative test pulse on 1 signal	900 µs
Permissible voltage fluctuations	+/- 25 %
Operating medium	Compressed air as per ISO 8573-1:2010 [7:4:4]
Information on operating and pilot media	Operation with oil lubrication possible (required for further use)
Vibration resistance	Transport application test with severity level 2 as per FN 942017-4 and EN 60068-2-6
Shock resistance	Shock test with severity level 2 as per FN 942017-5 and EN 60068-2-27
Corrosion resistance class (CRC)	1 - Low corrosion stress
LABS (PWIS) conformity	VDMA24364-B1/B2-L
Storage temperature	-20 °C...40 °C
Temperature of medium	-5 °C...50 °C
Relative air humidity	Max. 90 % at 40 °C
Ambient temperature	-5 °C...50 °C
Max. tightening torque for valve mounting	0.65 Nm
Product weight	325 g
Electrical connection	4-pin M8x1 Plug as per EN 60947-5-2
Type of mounting	With through-hole
Pneumatic connection 1	G1/8
Pneumatic connection 2	G1/8
Pneumatic connection 3	G1/8
Pneumatic connection 4	G1/8
Pneumatic connection 5	G1/8
Note on materials	RoHS-compliant
Seals material	NBR
Housing material	Die-cast aluminum