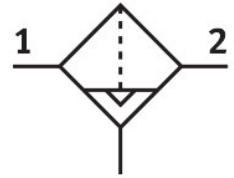


# Compressed air filter MS4N-LF-1/8-EUV

Part number: 535674

FESTO



## Data sheet

| Feature                          | Value  |
|----------------------------------|--|
| Size                             | 4  |
| Series                           | MS   |
| Mounting position                | Vertical +/- 5°  |
| Grade of filtration              | 40 µm  |
| Condensate drain                 | Fully automatic<br>Manual, non-detenting                   |
| Structural design                | Sinter filter with centrifugal separator                   |
| Bowl guard                       | Integrated as metal bowl guard                             |
| Degree of condensate separation  | 75 %   |
| Operating pressure               | 2 bar...12 bar   |
| Standard nominal flow rate       | 1100 l/min   |
| Operating medium                 | Compressed air as per ISO 8573-1:2010 [7:9:-]<br>Inert gas |
| Corrosion resistance class (CRC) | 2 - Moderate corrosion stress                              |
| LABS (PWIS) conformity           | VDMA24364-B1/B2-L  |
| Storage temperature              | -10 °C...60 °C   |
| For use in the food industry     | See supplementary material information                     |
| Air quality class at the output  | Compressed air as per ISO 8573-1:2010 [7:8:4]              |
| Temperature of medium            | -10 °C...60 °C   |
| Ambient temperature              | -10 °C...60 °C   |
| Pore size                        | 40 µm  |
| Product weight                   | 349 g  |
| Type of mounting                 | Line installation<br>With accessories<br>Optionally:       |
| Pneumatic connection 1           | 1/8 NPT  |
| Pneumatic connection 2           | 1/8 NPT  |
| Note on materials                | RoHS-compliant   |
| Material of sub-base             | Die-cast aluminum  |
| Seals material                   | NBR  |
| Compressed air filter material   | PE   |
| Housing material                 | Die-cast aluminum  |

| Feature                    | Value                                       |
|----------------------------|---|
| Material of bowl           | Die-cast aluminum<br>Wrought aluminum alloy |
| Inspection window material | PA  |
| Separating disc material   | POM   |