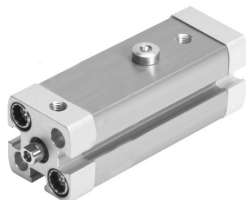


Swing clamp cylinder CLR-20-10-R-P-A

Part number: 535439

FESTO



Data sheet

| Feature | Value |
|--|--|
| Complete stroke | 22 mm |
| Piston diameter | 20 mm |
| Piston rod thread | M6 |
| Swivel angle | 90 deg +/- 3 deg |
| Clamping stroke | 10 mm |
| Cushioning | Elastic cushioning rings/pads at both ends |
| Mounting position | Any |
| Structural design | Piston Piston rod Cylinder barrel |
| Position sensing | For proximity sensor |
| Swivel direction | Right |
| Operating pressure | 2 bar...10 bar |
| Mode of operation | Double-acting |
| Operating medium | Compressed air as per ISO 8573-1:2010 [7:4:4] |
| Information on operating and pilot media | Operation with oil lubrication possible (required for further use) |
| Corrosion resistance class (CRC) | 2 - Moderate corrosion stress |
| LABS (PWIS) conformity | VDMA24364-B2-L |
| Ambient temperature | -10 °C...80 °C |
| Effective clamping force at 2 bar | 35 N |
| Effective clamping force at 4 bar | 73 N |
| Effective clamping force at 6 bar | 109 N |
| Max. clamping finger screw tightening torque | 12 Nm |
| Theoretical clamping force at 6 bar | 121 N |
| Product weight | 335 g |
| Type of mounting | With through-hole With internal thread With accessories Optionally: |
| Pneumatic connection | M5 |
| Flange screws material | Steel Galvanized |

| Feature | Value |
|-----------------------------|---|
| Cover material | Wrought aluminum alloy Coated |
| Seals material | NBR TPE-U(PU) |
| Housing material | Wrought aluminum alloy Smooth anodized |
| Piston rod material | High-alloy stainless steel |
| Material of cylinder barrel | Wrought aluminum alloy Smooth anodized |