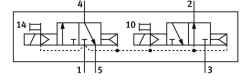
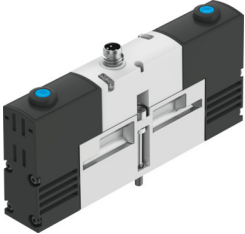


# Air solenoid valve VSVA-B-T32H-AH-A2-1R2L

Part number: 534773

FESTO



## Data sheet

| Feature                                      | Value   |
|--|---|
| Valve function                               | 2x3/2, open/closed, monostable  |
| Actuation type                               | Electrical  |
| Width  | 18 mm   |
| Standard nominal flow rate                   | 400 l/min   |
| Pneumatic working port                       | Sub-base, size 18 mm as per ISO 15407-1<br>Connecting plate size 02 according to VDMA 24563 |
| Operating voltage                            | 24V DC  |
| Operating pressure                           | 0.3 MPa...0.8 MPa<br>3 bar...8 bar  |
| Structural design                            | Piston gate valve   |
| Reset method                                 | Pneumatic spring  |
| Certification                                | C-Tick<br>c UL us - Recognized (OL)   |
| CE marking (see declaration of conformity)   | As per EU EMC directive   |
| UKCA marking (see declaration of conformity) | To UK instructions for EMC<br>To UK RoHS instructions                                       |
| Degree of protection                         | IP65  |
| Nominal width                                | 5 mm  |
| Exhaust air function                         | With flow control option  |
| Sealing principle                            | Soft  |
| Mounting position                            | Any   |
| Conforms to standard                         | ISO 15407-1<br>VDMA 24563   |
| Manual override                              | Non-detenting   |
| Type of control                              | Pilot-controlled  |
| Pilot air supply port                        | Internal  |
| Flow direction                               | Non-reversible  |
| Lap  | Overlap   |
| Reverse polarity protection                  | for all electrical connections  |
| Additional functions                         | Holding current reduction<br>Safety shut-down   |
| Signal status display                        | LED   |
| Flow rate of pneumatic valve                 | 600 l/min   |

| Feature  | Value  |
|--|--|
| Flow rate of pneumatic valve on individual sub-base                    | 450 l/min  |
| Optimized flow rate of pneumatic valve pneumatically concatenated flow | 400 l/min  |
| Switching time off   | 22 ms  |
| On switching time  | 10 ms  |
| DC operating voltage range   | 21.6 V...26.4 V  |
| Duty cycle   | 100%   |
| Max. positive test pulse with 0 signal                                 | 500 µs   |
| Max. negative test pulse on 1 signal                                   | 500 µs   |
| Coil characteristics   | 24 V DC: low-current phase 1.0 W, high-current phase 2.4 W                           |
| Operating medium   | Compressed air as per ISO 8573-1:2010 [7:4:4]  |
| Information on operating and pilot media                               | Operation with oil lubrication possible (required for further use)                   |
| Vibration resistance   | Transport application test with severity level 2 as per FN 942017-4 and EN 60068-2-6 |
| Shock resistance   | Shock test with severity level 2 as per FN 942017-5 and EN 60068-2-27                |
| Corrosion resistance class (CRC)                                       | 2 - Moderate corrosion stress  |
| LABS (PWIS) conformity   | VDMA24364-B1/B2-L  |
| Temperature of medium  | -5 °C...50 °C  |
| Relative air humidity  | 0 - 90 %   |
| Protection against direct and indirect contact                         | PELV   |
| Ambient temperature  | -5 °C...50 °C  |
| Max. tightening torque for valve mounting                              | 0.9 Nm...1.1 Nm  |
| Product weight   | 140 g  |
| Electrical connection  | 4-pin<br>M8x1<br>Central plug<br>Round design  |
| Type of mounting   | On sub-base  |
| Note on materials  | RoHS-compliant   |