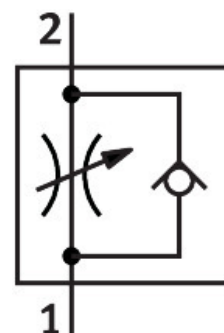


One-way flow control valve GR-QB-5/16-U

Part number: 534683

FESTO



Data sheet

Feature	Value
Valve function	Flow control non-return function
Pneumatic connection 1	QB-5/16
Pneumatic connection 2	QB-5/16
Actuation type	Manual
Adjusting element	Slotted screw
Type of mounting	Line installation With through-hole Optionally:
Standard nominal flow rate in flow control direction	35.9 cfm
Standard nominal flow rate in non-return direction	25.6 cfm...36.4 cfm
Operating pressure	-13.8 psi...116 psi
Ambient temperature	0 °C...60 °C
Housing material	PBT-reinforced
Mounting position	Any
Standard flow rate in flow control direction 6 -> 0 bar	60.6 cfm
Standard flow rate in non-return direction at 6 -> 0 bar	62 cfm...62.4 cfm
Operating medium	Compressed air as per ISO 8573-1:2010 [7:4:4]
Information on operating and pilot media	Operation with oil lubrication possible (required for further use)
LABS (PWIS) conformity	VDMA24364 zone III
Temperature of medium	32 °F...140 °F
Product weight	1.5 oz
Material of screwed plug	Brass Nickel-plated
Note on materials	RoHS-compliant
Seals material	NBR
Releasing ring material	POM

Feature	Value
Knurled head material	Brass Nickel-plated
Material of adjusting screw	Brass Nickel-plated