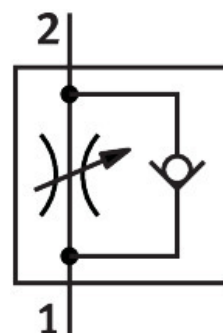


One-way flow control valve GRLA-1/2-QS-12-RS-D

Part number: 534344

FESTO



Data sheet

Feature	Value
Valve function	Flow control non-return function
Pneumatic connection 1	QS-12
Pneumatic connection 2	G1/2
Adjusting element	Knurled screw
Type of mounting	Screw-in With external thread
Standard nominal flow rate in flow control direction	1580 l/min
Standard nominal flow rate in non-return direction	925 l/min...1605 l/min
Operating pressure	0.2 bar...10 bar
Ambient temperature	-10 °C...60 °C
Maritime classification	See certificate
Mounting position	Any
Operating pressure for entire temperature range	0.2 bar...10 bar
Standard flow rate in flow control direction 6 -> 0 bar	2220 l/min
Standard flow rate in non-return direction at 6 -> 0 bar	1910 l/min...2500 l/min
Operating medium	Compressed air as per ISO 8573-1:2010 [7:4:4]
Information on operating and pilot media	Operation with oil lubrication possible (required for further use)
LABS (PWIS) conformity	VDMA24364-B1/B2-L
Cleanroom class	Class 4 according to ISO 14644-1
Storage temperature	-10 °C...40 °C
Temperature of medium	-10 °C...60 °C
Nominal tightening torque	15 Nm
Product weight	124 g
Note on materials	RoHS-compliant
Seals material	NBR
Hollow bolt material	Wrought aluminum alloy Anodized

Feature	Value
Releasing ring material	POM
Knurled head material	Wrought aluminum alloy Anodized
Material of adjusting screw	High-alloy stainless steel
Swivel joint material	Die-cast zinc