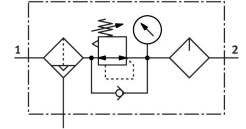


# Air preparation combination unit MSB6N-1/2-FRC2:J6M1

Part number: 533987

**FESTO**



## Data sheet

| Feature                                  | Value  |
|--|--|
| Size                                     | 6  |
| Series                                   | MS   |
| Actuator lock                            | Rotary knob with integrated lock   |
| Mounting position                        | Vertical +/- 5°  |
| Grade of filtration                      | 40 µm  |
| Condensate drain                         | Fully automatic  |
| Structural design                        | Filter regulator with pressure gauge<br>Proportional standard oil mist lubricator  |
| Controller function                      | Outlet pressure constant<br>With primary pressure compensation<br>With secondary exhausting<br>With return flow function |
| Bowl guard                               | Plastic bowl guard   |
| Pressure gauge                           | with pressure gauge  |
| Operating pressure                       | 1.5 bar...12 bar   |
| Pressure regulation range                | 0.3 bar...7 bar  |
| Standard nominal flow rate               | 4800 l/min   |
| Operating medium                         | Compressed air as per ISO 8573-1:2010 [7:4:-]<br>Inert gas   |
| Information on operating and pilot media | Operation with oil lubrication possible (required for further use)   |
| Corrosion resistance class (CRC)         | 2 - Moderate corrosion stress  |
| LABS (PWIS) conformity                   | VDMA24364-B1/B2-L  |
| Storage temperature                      | -10 °C...60 °C   |
| For use in the food industry             | See supplementary material information   |
| Air quality class at the output          | Compressed air as per ISO 8573-1:2010 [7:4:-]  |
| Temperature of medium                    | 5 °C...60 °C   |
| Ambient temperature                      | 5 °C...60 °C   |
| Product weight                           | 1495 g   |
| Type of mounting                         | With accessories   |
| Pneumatic connection 1                   | 1/2 NPT  |
| Pneumatic connection 2                   | 1/2 NPT  |
| Note on materials                        | RoHS-compliant   |