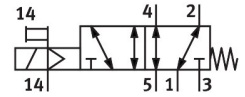


# Air solenoid valve

## MDH-5/2-D-1-S-FR-M12-C

Part number: 533761

**FESTO**



## Data sheet

| Feature                                | Value  |
|--|--|
| Valve function                         | 5/2, monostable                                  |
| Actuation type                         | Electrical                                       |
| Width                                  | 42 mm  |
| Standard nominal flow rate             | 1200 l/min                                       |
| Pneumatic working port                 | Sub-base, size 1 according to ISO 5599-1<br>G1/4 |
| Operating voltage                      | 24V DC   |
| Operating pressure                     | -0.9 bar...16 bar                                |
| Structural design                      | Piston gate valve                                |
| Reset method                           | Mechanical spring                                |
| Degree of protection                   | IP65   |
| Nominal width                          | 8 mm   |
| Width dimension                        | 43 mm  |
| Exhaust air function                   | With flow control option                         |
| Sealing principle                      | Soft   |
| Mounting position                      | Any  |
| Conforms to standard                   | ISO 5599-1                                       |
| Manual override                        | Non-detenting                                    |
| ISO code                               | 169  |
| Type of control                        | Pilot-controlled                                 |
| Pilot air supply port                  | External   |
| Flow direction                         | Reversible                                       |
| Lap                                    | Overlap  |
| Pilot pressure                         | 3 bar...10 bar                                   |
| Switching time off                     | 42 ms  |
| On switching time                      | 20 ms  |
| Duty cycle                             | 100%   |
| Max. positive test pulse with 0 signal | 3800 µs  |
| Max. negative test pulse on 1 signal   | 4900 µs  |
| Coil characteristics                   | 24 V DC: 2.7 W                                   |
| Permissible voltage fluctuations       | +/- 10 %   |
| Operating medium                       | Compressed air as per ISO 8573-1:2010 [7:4:4]    |

| Feature                                  | Value  |
|--|--|
| Information on operating and pilot media | Operation with oil lubrication possible (required for further use)                   |
| Vibration resistance                     | Transport application test with severity level 1 as per FN 942017-4 and EN 60068-2-6 |
| Shock resistance                         | Shock test with severity level 2 as per FN 942017-5 and EN 60068-2-27                |
| LABS (PWIS) conformity                   | VDMA24364-B1/B2-L  |
| Temperature of medium                    | -10 °C...50 °C   |
| Noise level                              | 85 dB(A)   |
| Pilot medium                             | Compressed air as per ISO 8573-1:2010 [7:4:4]  |
| Ambient temperature                      | -10 °C...50 °C   |
| Product weight                           | 420 g  |
| Electrical connection                    | M12x1  |
| Type of mounting                         | On sub-base<br>With through-hole   |
| Pilot air port 12                        | Sub-base   |
| Pilot air port 14                        | Sub-base   |
| Pneumatic connection 1                   | Sub-base, size 1 as per ISO 5599-1   |
| Pneumatic connection 2                   | Sub-base, size 1 as per ISO 5599-1   |
| Pneumatic connection 3                   | Sub-base, size 1 as per ISO 5599-1   |
| Pneumatic connection 4                   | Sub-base, size 1 as per ISO 5599-1   |
| Pneumatic connection 5                   | Sub-base, size 1 as per ISO 5599-1   |
| Seals material                           | HNBR<br>NBR  |
| Housing material                         | Die-cast aluminum  |