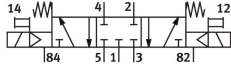
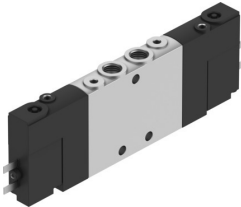


# Air solenoid valve

## CPE10-M1BH-5/3G-M7-B

Part number: 533141

**FESTO**



## Data sheet

| Feature                                | Value  |
|--|--|
| Valve function                         | 5/3, closed  |
| Actuation type                         | Electrical   |
| Width                                  | 10 mm  |
| Standard nominal flow rate             | 350 l/min  |
| Pneumatic working port                 | M7   |
| Operating voltage                      | 24V DC   |
| Operating pressure                     | 0.3 MPa...0.8 MPa<br>3 bar...8 bar                 |
| Structural design                      | Piston gate valve                                  |
| Reset method                           | Mechanical spring                                  |
| Certification                          | c UL us - Recognized (OL)                          |
| Maritime classification                | See certificate                                    |
| Certificate issuing authority          | DNV-TAA000032X<br>UL MH19482                       |
| Degree of protection                   | IP65<br>With plug socket<br>as per IEC 60529       |
| Nominal width                          | 4 mm   |
| Exhaust air function                   | With flow control option                           |
| Sealing principle                      | Soft   |
| Mounting position                      | Any  |
| Manual override                        | Detenting via accessory<br>Non-detenting           |
| Type of control                        | Pilot-controlled                                   |
| Pilot air supply port                  | Internal   |
| Flow direction                         | Non-reversible                                     |
| Valve position ID                      | Label holder                                       |
| Lap                                    | Overlap  |
| Switching time off                     | 20 ms  |
| On switching time                      | 16 ms  |
| Duty cycle                             | 100% in combination with holding current reduction |
| Max. positive test pulse with 0 signal | 1200 µs  |
| Max. negative test pulse on 1 signal   | 900 µs   |

| Feature                                  | Value  |
|--|--|
| Coil characteristics                     | 24 V DC: 1.28 W  |
| Permissible voltage fluctuations         | -15 % / +10 %  |
| Operating medium                         | Compressed air as per ISO 8573-1:2010 [7:4:4]  |
| Information on operating and pilot media | Operation with oil lubrication possible (required for further use)                   |
| Vibration resistance                     | Transport application test with severity level 2 as per FN 942017-4 and EN 60068-2-6 |
| Shock resistance                         | Shock test with severity level 2 as per FN 942017-5 and EN 60068-2-27                |
| Corrosion resistance class (CRC)         | 2 - Moderate corrosion stress  |
| LABS (PWIS) conformity                   | VDMA24364-B1/B2-L  |
| Temperature of medium                    | -5 °C...50 °C  |
| Ambient temperature                      | -5 °C...50 °C  |
| Product weight                           | 68 g   |
| Electrical connection                    | 2-pin  |
| Type of mounting                         | With through-hole  |
| Pilot exhaust air port 82                | M3   |
| Pilot exhaust air port 84                | M3   |
| Pilot air port 12                        | M3   |
| Pilot air port 14                        | M3   |
| Pneumatic connection 1                   | M7   |
| Pneumatic connection 2                   | M7   |
| Pneumatic connection 3                   | M7   |
| Pneumatic connection 4                   | M7   |
| Pneumatic connection 5                   | M7   |
| Note on materials                        | RoHS-compliant   |
| Seals material                           | NBR  |
| Housing material                         | Die-cast aluminum  |