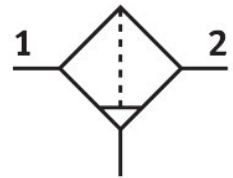


# Active carbon filter LFX-1/2-D-MIDI

Part number: 532783

**FESTO**



## Data sheet

Feature	Value
Size	Midi
Series	D
Mounting position	Vertical +/- 5°
Structural design	Active carbon filter Fiber filter
Bowl guard	Metal bowl guard
Operating pressure	0 MPa...1.6 MPa 0 bar...16 bar 0 psi...232 psi
Recommended maximum standard flow	900 l/min
Max. standard flow rate for air quality class	900 l/min
Operating medium	Compressed air as per ISO 8573-1:2010 [1:4:2] Inert gas
Information on operating and pilot media	Operation with oil lubrication possible (required for further use)
LABS (PWIS) conformity	VDMA24364-B1/B2-L
Storage temperature	-10 °C...60 °C
Air quality class at the output	Compressed air as per ISO 8573-1:2010 [1:4:1] Inert gas
Temperature of medium	5 °C...30 °C
Residual oil content	0.003 mg/m³
Ambient temperature	-10 °C...60 °C
Product weight	816 g
Type of mounting	Line installation With mounting bracket Optionally:
Pneumatic connection	G1/2
Pneumatic connection 1	Sub-base G1/2
Pneumatic connection 2	Sub-base G1/2
Note on materials	RoHS-compliant
Compressed air filter material	Activated carbon Fabric
Housing material	Die-cast zinc

Feature	Value
Material of bowl	PC