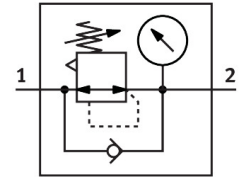


Pressure regulator MS6N-LR-1/2-D6-AS

Part number: 531449

FESTO



Data sheet

Feature	Value
Size	6
Series	MS
Actuator lock	Rotary knob with detent can be closed with accessories
Mounting position	Any
Structural design	Pressure regulator with pressure gauge
Controller function	Outlet pressure constant With primary pressure compensation With secondary exhausting
Pressure gauge	with pressure gauge
Operating pressure	0.8 bar...20 bar
Pressure regulation range	0.3 bar...7 bar
Max. pressure hysteresis	0.25 bar
Standard nominal flow rate	6500 l/min
Operating medium	Compressed air as per ISO 8573-1:2010 [7:4:4] Inert gas
Information on operating and pilot media	Operation with oil lubrication possible (required for further use)
Corrosion resistance class (CRC)	2 - Moderate corrosion stress
LABS (PWIS) conformity	VDMA24364-B1/B2-L
Storage temperature	-10 °C...60 °C
For use in the food industry	See supplementary material information
Temperature of medium	-10 °C...60 °C
Ambient temperature	-10 °C...60 °C
Product weight	730 g
Type of mounting	Front panel mounting Line installation With accessories Optionally:
Pneumatic connection 1	1/2 NPT
Pneumatic connection 2	1/2 NPT
Note on materials	RoHS-compliant
Material of operator panel	PA POM

Feature	Value
Seals material	NBR
Housing material	Die-cast aluminum
Diaphragm material	NBR
Separating disc material	POM