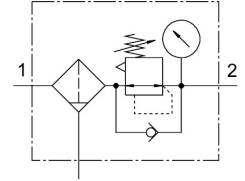


# Filter regulator MS6-LFR-1/2-D6-ERM-AS

Part number: 529180

FESTO



## Data sheet

| Feature                          | Value  |
|----------------------------------|--|
| Size                             | 6  |
| Series                           | MS   |
| Actuator lock                    | Rotary knob with detent<br>can be closed with accessories  |
| Mounting position                | Vertical +/- 5°  |
| Grade of filtration              | 40 µm  |
| Condensate drain                 | Manually rotating  |
| Structural design                | Filter regulator with pressure gauge                       |
| Max. condensate volume           | 38 ml  |
| Controller function              | Outlet pressure constant<br>With secondary exhausting      |
| Bowl guard                       | Plastic bowl guard   |
| Degree of condensate separation  | 75 %   |
| Pressure gauge                   | with pressure gauge  |
| Operating pressure               | 0.08 MPa...2 MPa<br>0.8 bar...20 bar                       |
| Pressure regulation range        | 0.3 bar...7 bar  |
| Max. pressure hysteresis         | 0.025 MPa<br>0.25 bar<br>3.625 psi                         |
| Standard nominal flow rate       | 6200 l/min   |
| Operating medium                 | Compressed air as per ISO 8573-1:2010 [::4::]<br>Inert gas |
| Corrosion resistance class (CRC) | 2 - Moderate corrosion stress                              |
| LABS (PWIS) conformity           | VDMA24364-B1/B2-L  |
| Storage temperature              | -10 °C...60 °C   |
| For use in the food industry     | See supplementary material information                     |
| Air quality class at the output  | Compressed air as per ISO 8573-1:2010 [7:4:4]              |
| Temperature of medium            | -10 °C...60 °C   |
| Ambient temperature              | -10 °C...60 °C   |
| Pore size                        | 40 µm  |
| Product weight                   | 875 g  |

| Feature                        | Value  |
|--------------------------------|--|
| Type of mounting               | Front panel mounting<br>Line installation<br>With accessories<br>Optionally: |
| Pneumatic connection 1         | G1/2   |
| Pneumatic connection 2         | G1/2   |
| Note on materials              | RoHS-compliant   |
| Material of operator panel     | PA<br>POM  |
| Seals material                 | NBR  |
| Compressed air filter material | PE   |
| Housing material               | Die-cast aluminum  |
| Diaphragm material             | NBR  |
| Material of bowl               | PC   |
| Separating disc material       | POM  |