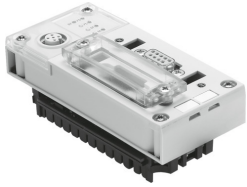


Bus node CPX-FB23-24

Part number: 526176

FESTO



Data sheet

Feature	Value
Protocol	CC-LINK®
Dimensions W x L x H	(incl. interlinking block) 50 mm x 107 mm x 50 mm
Product weight	115 g
Ambient temperature	-5 °C...50 °C
Storage temperature	-20 °C...70 °C
Degree of protection	IP65 IP67
Corrosion resistance class (CRC)	1 - Low corrosion stress
LABS (PWIS) conformity	VDMA24364-B2-L
Housing material	PA-reinforced PC
LED display (product-specific)	M: Modify, parameterization PL: load supply PS: electronics supply, sensor supply SF: system fault
LED display (bus-specific)	Error: communication error RD: receive data Run: communication status SD: send data
Device-specific diagnostics	Channel-oriented and module-oriented diagnostics Undervoltage of modules Diagnostic memory
Control elements	DIL switch
Fieldbus interface	Sub-D socket, 9-pin Customizable Sub-D plug Screw terminal strip, IP20
Max. address capacity inputs	14 byte 32 byte 64 byte
Information on inputs	14 bytes for Rx (F23) 32 bytes with RWr (F23) 64 bytes for Rx, RWr (F24)
Max. address capacity outputs	14 byte 32 byte 64 byte

Feature	Value
Note on outputs	14 bytes for Ry (F23) 32 bytes with RWw (F23) 64 byte for Ry, RWw (F24)
Parameterization	Diagnostic behavior Fail-safe response forcing of channels Signal setup System parameter
Baud rate	156 ... 10000 kbit/s
Additional functions	System status can be indicated via process data Additional diagnostic interface for operator units
DC operating voltage range	18 V...30 V
Nominal operating voltage DC	24 V
Intrinsic current consumption at nominal operating voltage	Typ. 70 mA