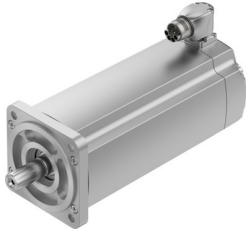


# Servo motor EMMT-AS-100-

Part number: 5185818

**FESTO**



## Data sheet

Feature	Value
Ambient temperature	-15 °C...40 °C
Note on ambient temperature	Up to 80 °C with derating of -1.75% per degree Celsius Up to 80 °C with derating of -2.25% per degree Celsius Up to 80 °C with derating of -1.5% per degree Celsius
Max. installation height	4000 m
Information on max. installation height	with 1,000 m and longer only with derating of -1.0% per 100 m
Storage temperature	-20 °C...70 °C
Relative air humidity	0 - 90 %
Conforms to standard	IEC 60034
Thermal class according to EN 60034-1	F
Max. winding temperature	155 °C
Rating class according to EN 60034-1	S1
Temperature monitoring	Digital motor temperature transmission via EnDat® 2.2
Motor type as per EN 60034-7	IM B5 IM V1 IM V3
Mounting position	Any
Degree of protection	IP40 IP65
Note on degree of protection	IP40 for motor shaft without rotary shaft seal IP65 for motor shaft with rotary shaft seal IP67 for motor housing, incl. connection technology
Concentricity, coaxiality, axial runout according to DIN SPEC 42955	N
Balancing quality	G 2.5
Detent torque	<1.0% of peak torque
Bearing lifetime, under nominal conditions	20000 h
Featherkey shaft design	DIN 6885 A 6 x 6 x 32
Interface code, motor out	100A
Electrical connection 1, connection type	Hybrid plug
Electrical connection 1, connection technology	M23x1
Electrical connection 1, number of pins/wires	15
Contamination level	2
Note on materials	RoHS-compliant

Feature	Value
Corrosion resistance class (CRC)	0 - No corrosion stress
LABS (PWIS) conformity	VDMA24364 zone III
Vibration resistance	Transport application test with severity level 2 as per FN 942017-4 and EN 60068-2-6
Shock resistance	Shock test with severity level 2 as per FN 942017-5 and EN 60068-2-27
Certification	RCM compliance mark German Technical Control Board (TÜV) c UL us - Recognized (OL)
CE marking (see declaration of conformity)	As per EU EMC directive As per EU low voltage directive As per EU RoHS directive
UKCA marking (see declaration of conformity)	To UK instructions for EMC To UK RoHS instructions To UK instructions for electrical equipment
Certificate issuing authority	TÜV 968/INS 464.00/24 UL E342973
Nominal operating voltage DC	680 V
Type of winding switch	Star inside
Number of pole pairs	5
Stall torque	6.3 Nm...13 Nm
Nominal torque	4.8 Nm...7.8 Nm
Peak torque	13.7 Nm...38.7 Nm
Nominal rotary speed	2700 rpm
Max. rotational speed	4530 rpm...5150 rpm
Angular acceleration	100000 rad/s <sup>2</sup>
Motor nominal power	1360 W...2200 W
Continuous stall current	4.4 A...9.7 A
Motor nominal current	3.4 A...5.9 A
Peak current	13.7 A...36 A
Motor constants	1.3 Nm/A...1.54 Nm/A
Standstill torque constant	1.34 Nm/A...1.75 Nm/A
Voltage constant, phase-to-phase	93.2 mVmin...106 mVmin
Phase-phase winding resistance	0.81 Ohm...3.35 Ohm
Winding inductance phase-phase	9 mH...32.4 mH
Winding longitudinal inductivity Ld (phase)	5.7 mH...17.8 mH
Cross inductivity Lq (phase)	6.8 mH...24.3 mH
Electric time constant	14.5 ms...16.7 ms
Total output inertia moment	3.15 kgcm <sup>2</sup> ...10.6 kgcm <sup>2</sup>
Product weight	5500 g...13300 g
Permissible axial shaft load	200 N
Permissible radial shaft load	815 N...1110 N
Rotor position sensor	Absolute encoder, single-turn Absolute encoder, multi-turn Safety encoder, absolute multi-turn
Rotor position sensor interface	EnDat® 22
Rotor position sensor measuring principle	Inductive
Rotor position sensor resolution	19 bit
Brake holding torque	11 Nm...18 Nm
Brake DC operating voltage	24 V
Brake power consumption	18 W...24 W

Feature	Value
	1 Safety device Safety integrity level 3 See user documentation Reliable recording and transmission of single-turn position data Reliable recording and transmission of single-turn position data, only with additional software function in the servo drive Performance Level e, Category 3 See user documentation Reliable recording and transmission of single-turn position data Reliable recording and transmission of single-turn position data, only with additional software function in the servo drive
Brake mass moment of inertia	0.74 kgcm <sup>2</sup> ...2.15 kgcm <sup>2</sup>
Switching cycles, holding brake	10 million idle actuations (without friction work!)
PFHd, subcomponent	15 x 10E-9, encoder
Duration of use Tm, subcomponent	20 years, rotor position sensor
MTTF, subcomponent	190 years, rotor position sensor
Energy efficiency	ENEFF (CN) / Class 2