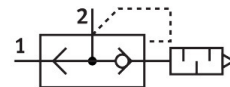


Quick exhaust valve SEU-1/8

Part number: 4616

FESTO



Data sheet

Feature	Value
Valve function	Quick exhaust
Selection of additional function	with muffler
Pneumatic connection 1	G1/8
Pneumatic connection 2	G1/8
Type of mounting	Screw-in
Standard nominal flow rate exhaust air 6->5 bar	550 l/min
Standard flow rate exhaust 6-> 0 bar	1000 l/min
Standard nominal flow rate pressurization 6->5 bar	300 l/min
Operating pressure	0.5 bar...10 bar
Ambient temperature	-20 °C...75 °C
Housing material	Die-cast zinc
Operating medium	Compressed air as per ISO 8573-1:2010 [7:4:4]
Nominal width	5 mm
Mounting position	Any
Information on operating and pilot media	Operation with oil lubrication possible (required for further use)
LABS (PWIS) conformity	VDMA24364-B1/B2-L
Temperature of medium	-20 °C...75 °C
Noise level	85 dB(A)
Product weight	65 g
Seals material	NBR