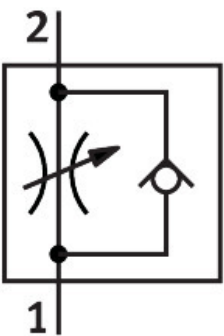


One-way flow control valve GRF-PK-3X2

Part number: 4566

FESTO



Data sheet

Feature	Value
Valve function	Flow control non-return function
Pneumatic connection 1	PK-3
Pneumatic connection 2	PK-3
Adjusting element	Knurled screw
Type of mounting	With through-hole
Standard nominal flow rate in flow control direction	45 l/min
Standard nominal flow rate in non-return direction	45 l/min
Operating pressure	0.5 bar...8 bar
Ambient temperature	-10 °C...60 °C
Housing material	Wrought aluminum alloy
Mounting position	Any
Operating medium	Compressed air as per ISO 8573-1:2010 [7:::]
Information on operating and pilot media	Operation with oil lubrication possible (required for further use)
LABS (PWIS) conformity	VDMA24364-B1/B2-L
Temperature of medium	-10 °C...60 °C
Product weight	145 g
Material of adjusting screw	Brass