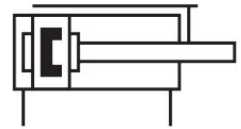
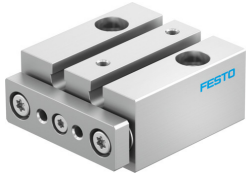


# Guided actuator DFM-6-20-P-A-GF

Part number: 4149947

**FESTO**



## Data sheet

Feature	Value
Distance of centre of gravity of payload to yoke plate xs	10 mm
Stroke	20 mm
Piston diameter	6 mm
Drive unit operating mode	Yoke
Cushioning	Elastic cushioning rings/pads at both ends
Mounting position	Any
Guide	Sliding guide
Structural design	Guide
Position sensing	For proximity sensor
Operating pressure	0.2 MPa...0.8 MPa 2 bar...8 bar
Max. speed	1.3 m/s
Mode of operation	Double-acting
Operating medium	Compressed air as per ISO 8573-1:2010 [7:4:4]
Information on operating and pilot media	Operation with oil lubrication possible (required for further use)
Corrosion resistance class (CRC)	1 - Low corrosion stress
LABS (PWIS) conformity	VDMA24364-B1/B2-L
Cleanroom class	Class 7 according to ISO 14644-1
Ambient temperature	-10 °C...60 °C
Impact energy in the end positions	0.012 Nm
Max. permissible torque load Mx as a function of the stroke	0.006 Nm
Max. payload as a function of the stroke at defined distance xs	0.5 N
Theoretical force at 6 bar, retracting	13 N
Theoretical force at 6 bar, advancing	17 N
Torsional backlash	0.1 deg
Moving mass	13 g
Product weight	45 g
Pneumatic connection	M3
Note on materials	RoHS-compliant
Cover material	High-alloy stainless steel
Seals material	NBR
Material of dynamic seals	HNBR

Feature	Value
End plate material	Wrought aluminum alloy, anodized
Guide rod material	High-alloy stainless steel
Housing material	Wrought aluminum alloy, anodized
Piston rod material	High-alloy stainless steel