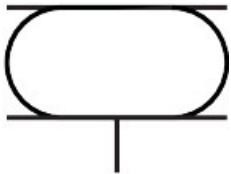


Bellow cylinder

EB-250-85

Part number: 36489

FESTO



Data sheet

Feature	Value
Size	250
Required installation Ø	265 mm
Stroke	85 mm
Max. height, advanced	140 mm
Max. angle of inclination	20 deg
Max. offset	10 mm
Min. installation height	51 mm
Mode of operation	Single-acting
Operating pressure	0 bar...8 bar
Operating medium	Compressed air as per ISO 8573-1:2010 [:-:4]
Information on operating and pilot media	Operation with oil lubrication not possible
Corrosion resistance class (CRC)	2 - Moderate corrosion stress
LABS (PWIS) conformity	VDMA24364-B1/B2-L
Ambient temperature	-40 °C...70 °C
Resetting force	200 N
Product weight	2300 g
Type of mounting	With internal thread
Pneumatic connection	G3/4
Note on materials	RoHS-compliant
Bellows material	NR/BR
Housing material	Steel Galvanized