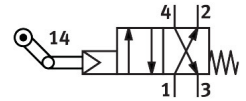


Toggle lever valve LS-4-1/8

Part number: 3416

FESTO



Data sheet

Feature	Value
Valve function	4/2, monostable
Actuation type	Mechanical
Standard nominal flow rate	128 l/min
Pneumatic working port	G1/8
Operating pressure	0.35 MPa...0.8 MPa 3.5 bar...8 bar
Structural design	Plate seat
Reset method	Mechanical spring
Nominal width	3.5 mm
Exhaust air function	With flow control option
Sealing principle	Soft
Mounting position	Any
Type of control	Pilot-controlled
Pilot air supply port	Internal
Flow direction	Non-reversible
Pilot medium	Compressed air as per ISO 8573-1:2010 [·:·:·]
Note on forced dynamization	Switching frequency min. 1/year
Operating medium	Compressed air as per ISO 8573-1:2010 [·:·:·]
Information on operating and pilot media	Operation with oil lubrication possible (required for further use)
Corrosion resistance class (CRC)	2 - Moderate corrosion stress
LABS (PWIS) conformity	VDMA24364-B1/B2-L
Temperature of medium	-10 °C...60 °C
Ambient temperature	-10 °C...60 °C
Actuating force	2.23 N
Product weight	220 g
Type of mounting	With through-hole
Pneumatic connection 1	G1/8
Pneumatic connection 2	G1/8
Pneumatic connection 3	G1/8
Pneumatic connection 4	G1/8
Note on materials	RoHS-compliant
Seals material	NBR

Feature	Value
Housing material	Aluminum Anodized