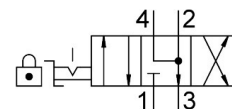


Hand lever valve VHER-P-H-B43E-B-M5

Part number: 3410682

FESTO



Data sheet

| Feature | Value |
|--|---|
| Valve function | 4/3, exhausted |
| Actuation type | Manual |
| Width | 30 mm |
| Standard nominal flow rate | 260 l/min |
| Pneumatic working port | M5 |
| Operating pressure | 0 bar...10 bar |
| Information on operating pressure | Vacuum operation at connection 3 only In dual pressure mode, the pressure at port 1 must be higher than at port 3. |
| Structural design | Rotary gate valve |
| Nominal width | 4 mm |
| Exhaust air function | With flow control option |
| Application note | Operate by hand only |
| Actuator lock | can be closed with accessories |
| Sealing principle | Hard |
| Type of control | Direct |
| Flow direction | Non-reversible |
| Underlap | yes |
| Switching position indication | with accessories |
| Explosion prevention and protection | Zone 2 (ATEX) Zone 22 (ATEX) |
| Operating medium | Compressed air as per ISO 8573-1:2010 [7:4:4] |
| Information on operating and pilot media | Operation with oil lubrication possible (required for further use) |
| Corrosion resistance class (CRC) | 2 - Moderate corrosion stress |
| LABS (PWIS) conformity | VDMA24364-B1/B2-L |
| Temperature of medium | -20 °C...80 °C |
| Ambient temperature | -20 °C...80 °C |
| Actuating torque | 0.5 Nm |
| Product weight | 80 g |
| Type of mounting | Front panel mounting With through-hole Optionally: |
| Pneumatic connection 1 | M5 |

| Feature | Value |
|------------------------|----------------|
| Pneumatic connection 2 | M5 |
| Pneumatic connection 3 | M5 |
| Pneumatic connection 4 | M5 |
| Note on materials | RoHS-compliant |
| Seals material | NBR |
| Housing material | PA |
| Lever material | PA |