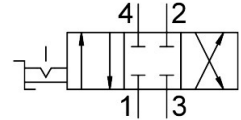
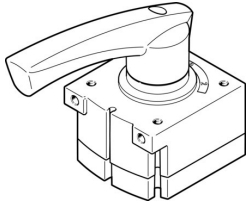


# Hand lever valve VHER-H-B43C-B-N12

Part number: 3192086

**FESTO**



## Data sheet

Feature	Value
Valve function	4/3, closed
Actuation type	Manual
Width	80 mm
Standard nominal flow rate	3800 l/min
Pneumatic working port	NPT1/2-14
Operating pressure	0 bar...10 bar
Information on operating pressure	Vacuum operation at connection 3 only In dual pressure mode, the pressure at port 1 must be higher than at port 3.
Structural design	Rotary gate valve
Nominal width	12 mm
Exhaust air function	With flow control option
Application note	Operate by hand only
Sealing principle	Hard
Type of control	Direct
Flow direction	Non-reversible
Underlap	yes
Switching position indication	with accessories
Operating medium	Compressed air as per ISO 8573-1:2010 [7:4:4]
Information on operating and pilot media	Operation with oil lubrication possible (required for further use)
Corrosion resistance class (CRC)	2 - Moderate corrosion stress
LABS (PWIS) conformity	VDMA24364-B1/B2-L
Temperature of medium	-20 °C...80 °C
Ambient temperature	-20 °C...80 °C
Actuating torque	5 Nm
Product weight	860 g
Type of mounting	Front panel mounting With through-hole Optionally:
Pneumatic connection 1	NPT1/2-14
Pneumatic connection 2	NPT1/2-14
Pneumatic connection 3	NPT1/2-14

Feature	Value
Pneumatic connection 4	NPT1/2-14
Note on materials	RoHS-compliant
Seals material	NBR
Housing material	Die-cast aluminum
Lever material	Die-cast aluminum