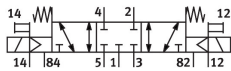


# Air solenoid valve

## MVH-5/3G-1/4-S-B

Part number: 31004

**FESTO**



## Data sheet

| Feature                                | Value   |
|--|---|
| Valve function                         | 5/3, closed                                   |
| Actuation type                         | Electrical                                    |
| Width                                  | 32 mm   |
| Standard nominal flow rate             | 1600 l/min                                    |
| Pneumatic working port                 | G1/4  |
| Operating pressure                     | -0.09 MPa...1 MPa<br>-0.9 bar...10 bar        |
| Structural design                      | Piston gate valve                             |
| Reset method                           | Mechanical spring                             |
| Nominal width                          | 10 mm   |
| Width dimension                        | 33 mm   |
| Exhaust air function                   | With flow control option                      |
| Sealing principle                      | Soft  |
| Mounting position                      | Any   |
| Manual override                        | Non-detenting                                 |
| Type of control                        | Pilot-controlled                              |
| Pilot air supply port                  | External                                      |
| Flow direction                         | Reversible                                    |
| Lap                                    | Overlap                                       |
| Pilot pressure MPa                     | 0.3 MPa...1 MPa                               |
| Pilot pressure                         | 3 bar...10 bar                                |
| b-value                                | 0.38  |
| C value                                | 6.35 l/sbar                                   |
| Max. switching frequency               | 3 Hz  |
| Switching time off                     | 37 ms   |
| On switching time                      | 27 ms   |
| Changeover time                        | 39 ms   |
| Max. positive test pulse with 0 signal | 2200 µs                                       |
| Max. negative test pulse on 1 signal   | 3700 µs                                       |
| Coil characteristics                   | 24 V DC: 2.5 W                                |
| Permissible voltage fluctuations       | +/- 10 %                                      |
| Operating medium                       | Compressed air as per ISO 8573-1:2010 [7:4:4] |

| Feature                                  | Value  |
|--|--|
| Information on operating and pilot media | Operation with oil lubrication possible (required for further use) |
| Corrosion resistance class (CRC)         | 1 - Low corrosion stress   |
| LABS (PWIS) conformity                   | VDMA24364-B1/B2-L  |
| Storage temperature                      | -40 °C...60 °C   |
| Temperature of medium                    | -5 °C...50 °C  |
| Pilot medium                             | Compressed air as per ISO 8573-1:2010 [7:4:4]                      |
| Ambient temperature                      | -5 °C...50 °C  |
| Product weight                           | 660 g  |
| Type of mounting                         | On PR rail<br>With through-hole<br>Optionally:                     |
| Auxiliary pilot air port 12              | G1/8   |
| Auxiliary pilot air port 14              | G1/8   |
| Pilot exhaust air port 82                | M5   |
| Pilot exhaust air port 84                | M5   |
| Pilot air port 12                        | G1/8   |
| Pilot air port 14                        | G1/8   |
| Pneumatic connection 1                   | G1/4   |
| Pneumatic connection 2                   | G¼   |
| Pneumatic connection 3                   | G1/4   |
| Pneumatic connection 4                   | G1/4   |
| Pneumatic connection 5                   | G1/4   |
| Note on materials                        | RoHS-compliant   |
| Seals material                           | NBR  |
| Housing material                         | Die-cast aluminum  |