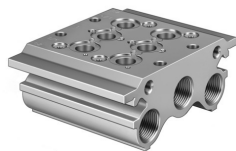


**Connection block**  
**PRS-3/8-2-B**  
Part number: 30682



**Data sheet**

| Feature                     | Value             |
|-----------------------------|-------------------|
| Max. no. of valve positions | 2                 |
| LABS (PWIS) conformity      | VDMA24364-B1/B2-L |
| Product weight              | 1600 g            |
| Type of mounting            | With through-hole |
| Pilot exhaust air port 82   | G1/8              |
| Pilot exhaust air port 84   | G1/8              |
| Pneumatic connection 1      | G3/4              |
| Pneumatic connection 3      | G3/4              |
| Pneumatic connection 5      | G3/4              |
| Material of sub-base        | Aluminum          |