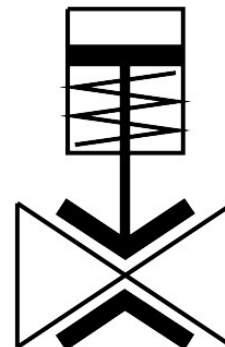


Pinch valve
VZQA-C-M22U-15-GG-V4V4S1-4
 Part number: 3022835

FESTO



Data sheet

Feature	Value
Structural design	Pinch valve, pneumatically operated
Actuation type	Pneumatic
Sealing principle	Soft
Mounting position	Any
Type of mounting	Line installation
Fitting connection	G1/2
Nominal width DN	15
Valve function	2/2, open, monostable
Flow direction	Reversible
Medium pressure	0 MPa...0.4 MPa 0 bar...4 bar 0 psi...58 psi
Note on the medium pressure	Use in the vacuum range was tested up to -0.09 MPa with the air at room temperature. Depending on the application, a counter-vacuum may have to be created on the control side to guarantee the media flow.
Operating pressure	0.1 MPa...0.65 MPa 1 bar...6.5 bar 14.5 psi...94.25 psi
Nominal pressure of fitting PN	10
Differential pressure	0.25 MPa 2.5 bar 36.25 psi
Burst pressure	1.6 MPa 16 bar 232 psi
Overload pressure	0.78 MPa 7.8 bar 113.1 psi
Reset method	Rebound resilience
Type of control	Externally controlled

Feature	Value
Auxiliary pilot air port 12	G1/8
Pilot medium	Compressed air as per ISO 8573-1:2010 [7:4:4]
Medium	Compressed air as per ISO 8573-1:2010 [-:-:-]
Max. viscosity	4000 mm ² /s
Temperature of medium	-5 °C...150 °C
Ambient temperature	-5 °C...60 °C
Storage temperature	5 °C...30 °C
Flow rate Kv	5 m ³ /h
On switching time	250 ms
Switching time off	250 ms
Note on materials	RoHS-compliant
LABS (PWIS) conformity	VDMA24364 zone III
Suitability for the production of Li-ion batteries	Product corresponds to Festo's internal product definition for use in battery production:Metals with more than 1% by mass of copper, zinc or nickel are excluded from use.The exceptions are nickel in steel, chemically nickel-plated surfaces, circuit boards, cables, electrical plug connectors and coils
Housing material	High-alloy stainless steel
Material number of housing	1.4404
Housing cover material	High-alloy stainless steel
Seals material	FPM
Shut-off element material	VMQ (silicone)
Product weight	431 g
For use in the food industry	See declaration of conformity
Material of bowl	PA6