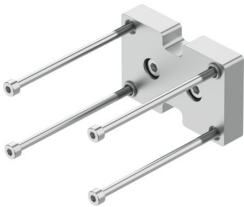


**Adapter kit**  
**DHAA-G-Q11-25-B12G-35**  
Part number: 2642962



**Data sheet**

| Feature                          | Value  |
|----------------------------------|--|
| Mounting position                | Any  |
| Corrosion resistance class (CRC) | 2 - Moderate corrosion stress                        |
| LABS (PWIS) conformity           | VDMA24364-B1/B2-L                                    |
| Type of mounting                 | With through-hole and screw<br>With centering sleeve |
| Note on materials                | RoHS-compliant                                       |
| Adapter plate material           | Aluminum<br>Anodized                                 |
| Material of screws               | Steel<br>Galvanized                                  |
| Centering pin material           | Steel  |