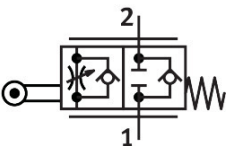


One-way flow control valve GRR-1/2

Part number: 2111

FESTO



Data sheet

Feature	Value
Valve function	Flow control non-return function
Pneumatic connection 1	G1/2
Pneumatic connection 2	G1/2
Adjusting element	Roller lever
Type of mounting	With through-hole
Standard nominal flow rate in flow control direction	1300 l/min
Standard nominal flow rate in non-return direction	1250 l/min
Operating pressure	0.3 bar...10 bar
Ambient temperature	-10 °C...60 °C
Housing material	Wrought aluminum alloy
Mounting position	Any
Operating medium	Compressed air as per ISO 8573-1:2010 [7::-]
Information on operating and pilot media	Operation with oil lubrication possible (required for further use)
LABS (PWIS) conformity	VDMA24364-B2-L
Temperature of medium	-10 °C...60 °C
Product weight	735 g