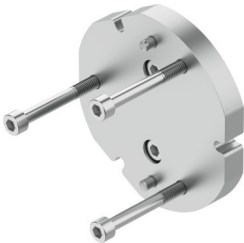


Adapter kit
DHAA-G-Q11-32-B7-50
Part number: 2077335



Data sheet

| Feature | Value |
|----------------------------------|--|
| Mounting position | Any |
| Corrosion resistance class (CRC) | 2 - Moderate corrosion stress |
| LABS (PWIS) conformity | VDMA24364-B1/B2-L |
| Type of mounting | With through-hole and screw With centering sleeve |
| Note on materials | RoHS-compliant |
| Adapter plate material | Aluminum Anodized |
| Material of screws | Steel Galvanized |
| Centering pin material | Steel |