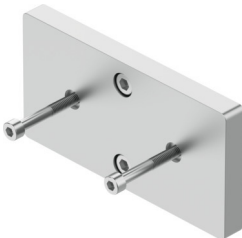


**Adapter kit**  
**DHAA-G-Q11-32-B6/B17-25-20/40**  
Part number: 2021733



**Data sheet**

Feature	Value
Mounting position	Any
Corrosion resistance class (CRC)	2 - Moderate corrosion stress
LABS (PWIS) conformity	VDMA24364-B1/B2-L
Type of mounting	With through-hole and screw With centering sleeve
Note on materials	RoHS-compliant
Adapter plate material	Aluminum Anodized
Material of screws	Steel Galvanized
Centering pin material	Steel