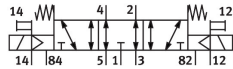
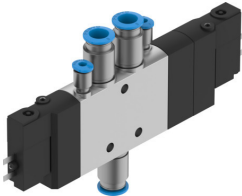


Air solenoid valve

CPE14-M1BH-5/3ES-QS-8

Part number: 196902

FESTO



Data sheet

| Feature | Value |
|-------------------------------|--|
| Valve function | 5/3, exhausted |
| Actuation type | Electrical |
| Width | 14 mm |
| Standard nominal flow rate | 570 l/min |
| Pneumatic working port | QS-8 |
| Operating voltage | 24V DC |
| Operating pressure | -0.09 MPa...1 MPa -0.9 bar...10 bar |
| Structural design | Piston gate valve |
| Reset method | Mechanical spring |
| Certification | c UL us - Recognized (OL) |
| Maritime classification | See certificate |
| Certificate issuing authority | DNV-TAA000032X UL MH19482 |
| Degree of protection | IP65 With plug socket as per IEC 60529 |
| Nominal width | 6 mm |
| Exhaust air function | With flow control option |
| Sealing principle | Soft |
| Mounting position | Any |
| Manual override | Detenting via accessory Non-detenting |
| Type of control | Pilot-controlled |
| Pilot air supply port | External |
| Flow direction | Reversible |
| Valve position ID | Label holder |
| Lap | Overlap |
| Pilot pressure MPa | 0.3 MPa...0.8 MPa |
| Pilot pressure | 3 bar...8 bar |
| Switching time off | 42 ms |
| On switching time | 20 ms |
| Duty cycle | 100% in combination with holding current reduction |

| Feature | Value |
|--|--|
| Max. positive test pulse with 0 signal | 1200 µs |
| Max. negative test pulse on 1 signal | 900 µs |
| Coil characteristics | 24 V DC: 1.28 W |
| Permissible voltage fluctuations | -15 % / +10 % |
| Operating medium | Compressed air as per ISO 8573-1:2010 [7:4:4] |
| Information on operating and pilot media | Operation with oil lubrication possible (required for further use) |
| Vibration resistance | Transport application test with severity level 2 as per FN 942017-4 and EN 60068-2-6 |
| Shock resistance | Shock test with severity level 2 as per FN 942017-5 and EN 60068-2-27 |
| Corrosion resistance class (CRC) | 2 - Moderate corrosion stress |
| LABS (PWIS) conformity | VDMA24364-B1/B2-L |
| Temperature of medium | -5 °C...50 °C |
| Pilot medium | Compressed air as per ISO 8573-1:2010 [7:4:4] |
| Ambient temperature | -5 °C...50 °C |
| Electrical connection | 2-pin |
| Type of mounting | With through-hole |
| Pilot exhaust air port 82 | M3 |
| Pilot exhaust air port 84 | M3 |
| Pilot air port 12 | M3 |
| Pilot air port 14 | M3 |
| Pneumatic connection 1 | QS-8 |
| Pneumatic connection 2 | QS-8 |
| Pneumatic connection 3 | G1/8 |
| Pneumatic connection 4 | QS-8 |
| Pneumatic connection 5 | G1/8 |
| Note on materials | RoHS-compliant |
| Seals material | NBR |
| Housing material | Die-cast aluminum |