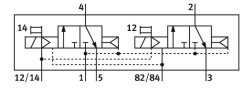


# Air solenoid valve CDVI5.0-MT2H-2X3GLS

Part number: 196661

**FESTO**



## Data sheet

Feature	Value
Valve function	2x3/2, closed, monostable
Actuation type	Electrical
Standard nominal flow rate	300 l/min
Pneumatic working port	Sub-base
Operating voltage	24V DC
Operating pressure	3 bar...10 bar
Structural design	Piston gate valve
Reset method	Pneumatic spring
Nominal width	5 mm
Sealing principle	Soft
Manual override	Non-detenting
Type of control	Pilot-controlled
Pilot air supply port	External
Flow direction	Non-reversible
Note on forced dynamization	Switching frequency at least once a month
Pilot pressure	3 bar...8 bar
b-value	0.14
C value	1.4 l/sbar
Switching time off	22 ms
On switching time	10 ms
Operating medium	Compressed air as per ISO 8573-1:2010 [7:4:4]
Information on operating and pilot media	Operation with oil lubrication possible (required for further use)
Corrosion resistance class (CRC)	3 - High corrosion stress
LABS (PWIS) conformity	VDMA24364-B2-L
Temperature of medium	-5 °C...50 °C
Ambient temperature	-5 °C...50 °C
Product weight	210 g
Type of mounting	Screw-in
Pilot exhaust air port 82/84	Sub-base
Pneumatic connection 1	Sub-base
Pneumatic connection 2	Sub-base

Feature	Value
Pneumatic connection 3	Sub-base
Pneumatic connection 4	Sub-base
Pneumatic connection 5	Sub-base
Note on materials	RoHS-compliant
Seals material	NBR TPE-O
Housing material	Die-cast aluminum