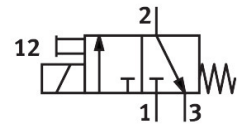


Air solenoid valve

MHE2-M1H-3/2G-M7-K

Part number: 196132

FESTO



Data sheet

Feature	Value
Valve function	3/2, closed, monostable
Actuation type	Electrical
Width	10 mm
Standard nominal flow rate	100 l/min
Pneumatic working port	M7
Operating voltage	24V DC
Operating pressure	-0.09 MPa...0.8 MPa -0.9 bar...8 bar -13.05 psi...116 psi
Structural design	Pressure-relieved poppet valve
Reset method	Mechanical spring
Degree of protection	IP55
Certification	c UL us - Recognized (OL)
Nominal width	2 mm
Width dimension	14 mm
Note on grid dimension	Minimum distance between the valves is 4 mm
Exhaust air function	With flow control option
Sealing principle	Soft
Mounting position	Any
Manual override	Non-detenting
Type of control	Direct
Flow direction	Reversible with restrictions
Lap	Underlap
Operating pressure, reversible	-0.09 MPa...0.1 MPa -0.9 bar...1 bar -13.05 psi...14.5 psi
Max. switching frequency	130 Hz
Switching time off	3.5 ms
On switching time	7 ms
Duty cycle	100%
Coil characteristics	24 V DC: 2.88 W
Permissible voltage fluctuations	+/- 10 %

Feature	Value
Operating medium	Compressed air as per ISO 8573-1:2010 [7:4:4]
Information on operating and pilot media	Operation with oil lubrication possible (required for further use)
Vibration resistance	Transport application test with severity level 2 as per FN 942017-4 and EN 60068-2-6
Shock resistance	Shock test with severity level 2 as per FN 942017-5 and EN 60068-2-27
Corrosion resistance class (CRC)	2 - Moderate corrosion stress
LABS (PWIS) conformity	VDMA24364-B1/B2-L
Cleanroom class	Class 6 according to ISO 14644-1
Temperature of medium	-5 °C...60 °C
Ambient temperature	-5 °C...60 °C
Product weight	60 g
Electrical connection	Cable
Cable length	2.5 m
Type of mounting	With through-hole
Pneumatic connection 1	M7
Pneumatic connection 2	M7
Pneumatic connection 3	M7
Note on materials	RoHS-compliant
Seals material	HNBR NBR
Housing material	Die-cast metal, coated
Material of cable sheath	PUR
Material of screws	Steel, galvanized