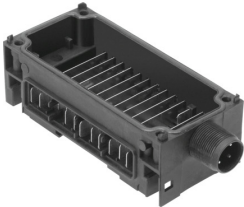


Interlinking block CPX-GE-EV-Z

Part number: 195744



Data sheet

Feature	Value
Type of mounting	Tie rod
Product weight	125 g
Corrosion resistance class (CRC)	1 - Low corrosion stress
LABS (PWIS) conformity	VDMA24364-B2-L
Note on materials	RoHS-compliant
Housing material	PA-reinforced
Electrical connection	4-pin M18
Max. power supply	16 A
Power supply	Additional supply