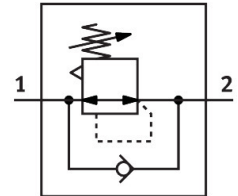


Pressure regulator LRS-1/2-D-7-O-I-MIDI

Part number: 194649

FESTO



Data sheet

| Feature | Value |
|--|--|
| Size | Midi |
| Series | D |
| Actuator lock | Rotary knob with integrated lock |
| Mounting position | Any |
| Structural design | Directly controlled diaphragm regulator |
| Controller function | Outlet pressure constant With primary pressure compensation With secondary exhausting With return flow function |
| Pressure gauge | G1/4 prepared |
| Operating pressure | 0 MPa...1.6 MPa 0 bar...16 bar |
| Pressure regulation range | 0.5 bar...7 bar |
| Max. pressure hysteresis | 0.02 MPa 0.2 bar 2.9 psi |
| Standard nominal flow rate | 4000 l/min |
| Operating medium | Compressed air as per ISO 8573-1:2010 [7:4:4] Inert gas |
| Information on operating and pilot media | Operation with oil lubrication possible (required for further use) |
| LABS (PWIS) conformity | VDMA24364-B1/B2-L |
| Air quality class at the output | Compressed air as per ISO 8573-1:2010 [7:4:4] Inert gas |
| Temperature of medium | -10 °C...60 °C |
| Ambient temperature | -10 °C...60 °C |
| Product weight | 1180 g |
| Type of mounting | Front panel mounting Line installation With accessories |
| Pneumatic connection 1 | G1/2 |
| Pneumatic connection 2 | G1/2 |
| Note on materials | RoHS-compliant |
| Material of sub-base | Die-cast zinc |

| Feature | Value |
|------------------|---------------|
| Seals material | NBR |
| Housing material | Die-cast zinc |