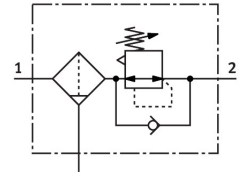


# Filter regulator LFR-1-D-5M-O-MAXI

Part number: 192619

**FESTO**



## Data sheet

| Feature                                  | Value  |
|--|--|
| Size                                     | Maxi   |
| Series                                   | D  |
| Actuator lock                            | Rotary knob with detent  |
| Mounting position                        | Vertical +/- 5°  |
| Grade of filtration                      | 5 µm   |
| Condensate drain                         | Manually rotating  |
| Structural design                        | Filter regulator without pressure gauge                            |
| Max. condensate volume                   | 80 cm³   |
| Bowl guard                               | Metal bowl guard   |
| Pressure gauge                           | G1/4 prepared  |
| Operating pressure                       | 0.1 MPa...1.6 MPa<br>1 bar...16 bar                                |
| Pressure regulation range                | 0.5 bar...12 bar   |
| Max. pressure hysteresis                 | 0.4 bar  |
| Standard nominal flow rate               | 8000 l/min   |
| Operating medium                         | Compressed air as per ISO 8573-1:2010 [::9::]<br>Inert gas         |
| Information on operating and pilot media | Operation with oil lubrication possible (required for further use) |
| Corrosion resistance class (CRC)         | 2 - Moderate corrosion stress                                      |
| LABS (PWIS) conformity                   | VDMA24364-B1/B2-L  |
| Storage temperature                      | -10 °C...60 °C   |
| Air quality class at the output          | Compressed air as per ISO 8573-1:2010 [6:8:4]<br>Inert gas         |
| Temperature of medium                    | -10 °C...60 °C   |
| Ambient temperature                      | -10 °C...60 °C   |
| Product weight                           | 1470 g   |
| Type of mounting                         | Line installation<br>With accessories<br>Optionally:               |
| Pneumatic connection 1                   | G1   |
| Pneumatic connection 2                   | G1   |
| Note on materials                        | RoHS-compliant   |
| Housing material                         | Die-cast zinc  |

| Feature          | Value |
|------------------|-------|
| Material of bowl | PC    |