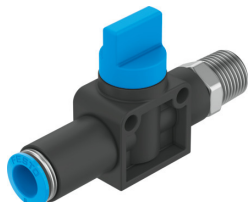


On off valve HE-3A-1/2-QS-1/2-U

Part number: 190876

FESTO



Data sheet

Feature	Value
Valve function	3/2, bistable
Selection of additional function	with exhaust function
Pneumatic connection 1	QS-1/2
Pneumatic connection 2	1/2 NPT
Actuation type	Manual
Type of mounting	Direct mounting via through-hole Direct fastening via thread Optionally:
Standard nominal flow rate	770.4 l/min
Nominal width	4.6 mm
Operating pressure	-0.095 MPa...1 MPa -0.95 bar...10 bar
Ambient temperature	0 °C...60 °C
Housing material	PBT-reinforced
Operating medium	Compressed air as per ISO 8573-1:2010 [7:::]
Exhaust air function	Without flow control option
Sealing principle	Soft
Mounting position	Any
Structural design	Piston gate valve
Type of control	Direct
Flow direction	Non-reversible
Information on operating and pilot media	Operation with oil lubrication possible (required for further use)
Corrosion resistance class (CRC)	2 - Moderate corrosion stress
LABS (PWIS) conformity	VDMA24364-B2-L
Cleanroom class	Class 4 according to ISO 14644-1
Temperature of medium	0 °C...60 °C
Product weight	87 g
Pneumatic connection 3	Not ducted
Note on materials	RoHS-compliant
Seals material	NBR