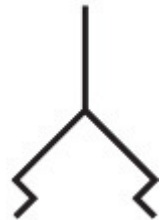
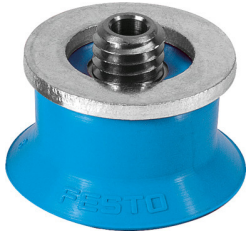


Vacuum suction cup

ESS-30-EU

Part number: 189343

FESTO



Data sheet

Feature	Value
Min. workpiece radius	50 mm
Nominal width	3 mm
Suction cup diameter	30 mm
Suction cup volume	2.12 cm ³
Connection position	Top
Mounting position	Any
Classification of suction cup holder	Size 4
Suction cup shape	Round, extra-deep
Operating pressure	-95 kPa...0 kPa -0.95 bar...0 bar -13.775 psi...0 psi
Nominal operating pressure	-70 kPa -0.7 bar -10.15 psi
Operating medium	Atmospheric air based on ISO 8573-1:2010 [7:-:-]
Corrosion resistance class (CRC)	1 - Low corrosion stress
LABS (PWIS) conformity	VDMA24364 zone III
For use in the food industry	See supplementary material information
Ambient temperature	-20 °C...60 °C
Holding force at nominal operating pressure	37.2 N
Lateral force at nominal operating pressure	41.5 N
Product weight	9.2 g
Type of mounting	Via vacuum connection
Vacuum connection	M6
Color	Blue
Shore hardness	60 +/- 5
Material of screwed plug	Brass, nickel-plated Steel, galvanized and chrome-plated
Note on materials	RoHS-compliant
Suction cup material	PUR