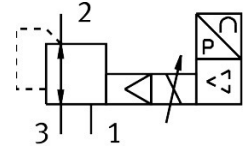


Proportional pressure control valve MPPE-3-1/4-6-010

Part number: 187337

FESTO



Data sheet

| Feature | Value |
|--|---|
| Nominal width pressurization | 7 mm |
| Exhaust nominal width | 7 mm |
| Actuation type | Electrical |
| Sealing principle | Soft |
| Mounting position | Any |
| Structural design | Pilot-controlled piston control valve |
| Short-circuit protection | For all electrical connections |
| Safety instructions | MPPE safety position: if the power supply cable breaks, the outlet pressure will drop to 0 bar. |
| Reverse polarity protection | for all electrical connections |
| Valve function | 3-way proportional pressure control valve closed |
| Operating pressure | 0.8 MPa 8 bar |
| Pressure regulation range MPa | 0 MPa...0.6 MPa |
| Pressure regulation range | 0 bar...6 bar |
| Inlet pressure 1 | 7 bar...8 bar |
| Inlet pressure 1 MPa | 0.7 MPa...0.8 MPa |
| Max. pressure hysteresis | 0.005 MPa 0.05 bar |
| Switching time off | 640 ms |
| On switching time | 200 ms |
| DC operating voltage range | 18 V...30 V |
| Nominal operating voltage DC | 24 V |
| Residual ripple | 10 % |
| Setpoint/actual values | Voltage type 0 - 10 V |
| Operating medium | Compressed air as per ISO 8573-1:2010 [7:4:4] Inert gas |
| Information on operating and pilot media | Operation with oil lubrication possible (required for further use) |
| Certification | RCM compliance mark |
| KC characters | KC EMC |
| CE marking (see declaration of conformity) | As per EU EMC directive As per EU RoHS directive |

| Feature | Value |
|--|---|
| UKCA marking (see declaration of conformity) | To UK instructions for EMC To UK RoHS instructions |
| Corrosion resistance class (CRC) | 2 - Moderate corrosion stress |
| LABS (PWIS) conformity | VDMA24364-B2-L |
| Temperature of medium | 0 °C...60 °C |
| Degree of protection | IP65 |
| Ambient temperature | 0 °C...50 °C |
| Product weight | 1310 g |
| Electrical connection | 8-pin M16x0.75 Plug as per DIN 45326 Round design |
| Type of mounting | With through-hole |
| Pneumatic connection 1 | G1/4 |
| Pneumatic connection 2 | G1/4 |
| Pneumatic connection 3 | G1/4 |
| Note on materials | RoHS-compliant |
| Housing material | Wrought aluminum alloy |
| Diaphragm material | NBR |