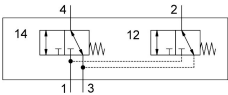


Front panel valve SV/O-3-PK-3X2

Part number: 184135



Data sheet

| Feature | Value |
|-------------------------------------|--|
| Valve function | 2x3/2, closed, monostable |
| Standard nominal flow rate | 70 l/min |
| Pneumatic working port | PK-3 |
| Operating pressure | 0 bar...8 bar |
| Reset method | Mechanical spring |
| Nominal width | 2.5 mm |
| Sealing principle | Soft |
| Mounting position | Any |
| Type of control | Direct |
| Flow direction | Non-reversible |
| Explosion prevention and protection | Zone 1 (ATEX) Zone 2 (ATEX) Zone 21 (ATEX) Zone 22 (ATEX) |
| Operating medium | Compressed air as per ISO 8573-1:2010 [7:-:-] |
| LABS (PWIS) conformity | VDMA24364-B1/B2-L |
| Ambient temperature | -10 °C...60 °C |
| Product weight | 34 g |
| Type of mounting | With through-hole |
| Pneumatic connection 1 | PK-3 |
| Pneumatic connection 2 | PK-3 |
| Seals material | NBR |