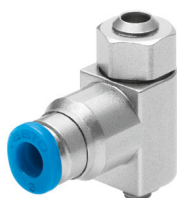


# One-way flow control valve GRLA-M5-QS-4-LF-C

Part number: 175056

**FESTO**



## Data sheet

Feature	Value
Valve function	Exhaust air flow control non-return function
Pneumatic connection 1	QS-4
Pneumatic connection 2	M5
Adjusting element	Slotted screw
Type of mounting	Screw-in
Standard nominal flow rate in flow control direction	40 l/min
Standard nominal flow rate in non-return direction	50 l/min...75 l/min
Operating pressure	0.2 bar...10 bar 2.9 psi...145 psi
Ambient temperature	-10 °C...60 °C
Maritime classification	See certificate
Mounting position	Any
Standard flow rate in flow control direction 6 -> 0 bar	80 l/min
Standard flow rate in non-return direction at 6 -> 0 bar	100 l/min...150 l/min
Operating medium	Compressed air as per ISO 8573-1:2010 [7:4:4]
Information on operating and pilot media	Operation with oil lubrication possible (required for further use)
LABS (PWIS) conformity	VDMA24364-B1/B2-L
Cleanroom class	Class 4 according to ISO 14644-1
Temperature of medium	-10 °C...60 °C
Max. tightening torque	1.5 Nm
Product weight	9 g
Material of screwed plug	Brass Nickel-plated
Note on materials	RoHS-compliant
Seals material	NBR
Releasing ring material	POM
Material of adjusting screw	Brass

Feature	Value
Swivel joint material	Die-cast zinc